



DISPLACEMENT TRACKING MATRIX (DTM) Haiti—Hurricane Matthew Response

17 November 2016—Dashboard II

Following the passage of Hurricane Matthew over Haiti on 4 October 2016, IOM Haiti has launched its Displacement Tracking Matrix process. As part of this process, IOM teams have assessed evacuation shelters to compile overall shelter information. Full registration of these evacuation shelters is ongoing as well as data entry into IOM's database for further analysis. This dashboard presents available data and will be updated on a regular basis.

Shelter Assessments



Shelters assessments in 254 Evacuation Shelters
8,654 Households
35,074 Individuals

Available Registration Data (as of November 17th 2016)



56 Evacuation Shelters
2,782 Households
12,503 Individuals

Demographic Data



49.6 % Female
 50.4 % Male

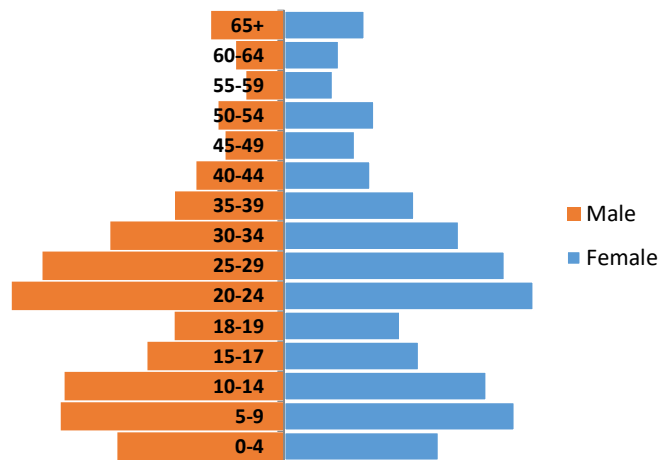


7.7 % are under the age of 5

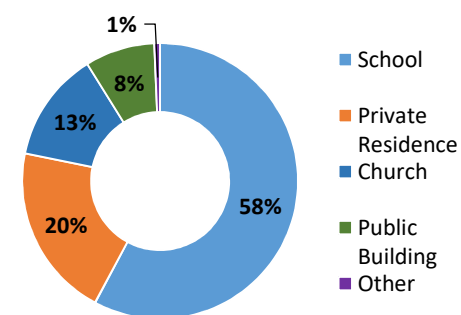


8.2 % are over the age of 59

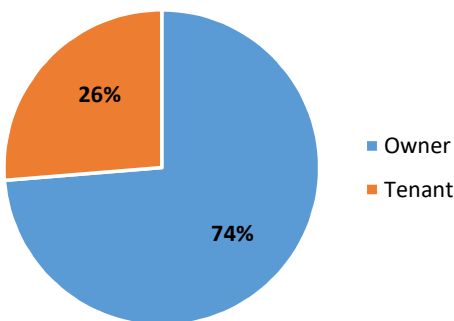
Age and sex breakdown



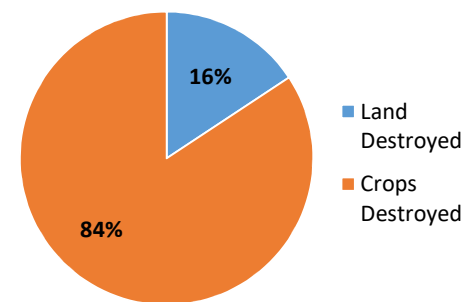
Typology of shelters



Housing status before Matthew



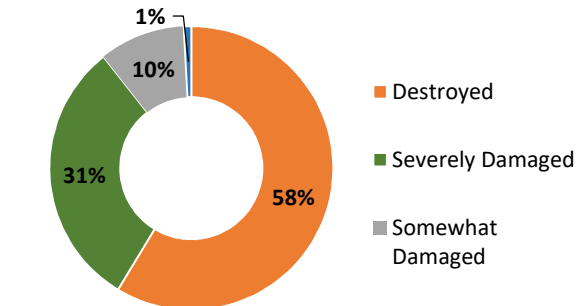
Land status following Matthew



Summary table of assessed and registered shelters

Department	Grande	Sud	Nippes
Sites Assessed	123	93	38
Sites Registered	50	22	2
Sites Vacated	27	42	0

State of housing following Matthew



House construction material

